

ROUGH-TERRAIN CRANE RT75



ZOOMLION

Zoomlion Heavy Industry Science & Technology Co.,Ltd.

Add: No.677 Lugu Road Zoomlion Industrial Park Changsha,Hunan,China,410205

Copyright © 2016 Zoomlion. All rights reserved. Reproduction and copying of any part of the contents is not allowed for any purposes without Zoomlion's written approval.
Note: No product coating appearance shall be subject to sample.



ZOOMLION

CONTENTS

FEATURES.....	2
KEY/SYMBOLS.....	3
TECHNICAL DESCRIPTION.....	5-6
CRANE AND COMPONENT WEIGHTS.....	7
WORKING RANGE DIAGRAM.....	7
CRANE DIMENSIONS.....	8
LOAD CHARTS.....	9-14

FEATURES



Formed boom made with highyield steel which reduces the operating weight of the boom and maximizes performance.



We chose the AxleTech brand axle because AxleTech offers the most reliable product on the market and has years of experience in manufacturing mobile crane axles.



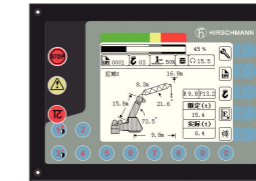
Full-vision operator cab is designed for maximum comfort and ease of operation.



The Dana transmission offers the latest technology for the diverse needs of off-road cranes.



The Cummins QSB 6.7 diesel engine is TIER-III compliant and is proven to have superior performance and durability.











HIRSCHMANN HC4900 LMI (Load Moment Indicator), delivers the industry's most reliable electronic monitoring system available.

STANDARD EQUIPMENT

- Formed boom
- Offsettable jib 0°-20°-40°
- Auxiliary winch
- Cameras
- Auxiliary lifting sheave
- 75 ton (82.5 U.S.ton) hook block
- 8.3 ton (9.1 U.S.ton) hook ball
- Rotation-resistant wire rope
- Deluxe tilt seat
- Air conditioner/Heater
- Work light package : boom, cab and super structure
- Revolving amber light
- AM/FM radio
- Battery disconnect switch
- Front and rear lift lugs

ANSI & CE Standard

KEY/SYMBOLS

	Engine	p4		Transmission	p6
	Axles	p4		Cameras	p6
	Steering	p4		Brakes	p6
	Gradeability	p4		Main boom	p6
	Tires and wheels	p4		Hook ball	p6
	Outrigger system (100%, 50%, 0% extended)	p4		Hook block	p6
	Swing	p5		Main and auxiliary winches	p6
	Hydraulic system	p5		Crane with counterweight	p7
	Counterweight	p5		Side-stowed jib	p7
	Operator cab	p5		Distance from the hook to the head	p7
	Max. boom length with jib ext.	p5		Tip height	p7
	Load Moment Indicator(LMI)	p5		Working radius	p7

TECHNICAL DESCRIPTION



ENGINE

Cummins QSB 6.7Inline 6 cylinder intercooled turbo diesel.
 Kilowatts kW (Hp)194 (260) @ 2500 rpm.
 Peak torque Nm (ft. lb.)990 (730) @ 1500 rpm.
 300 liter (79.3 gal) fuel tank capacity.

USA Federal EPA / California ARB / European EU / Tier III emission rating.



AXLES

AXLE-TECH front and rear steering axles with planetary reduction.

Front - Rigid mount.

Rear - Full-floating rear axle. Automatic rear axle oscillating lock occurs when superstructure is swung 10° from centerline in either direction



STEERING

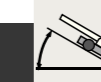
Power steering with four independent modes:

Front Wheel

Rear-Wheel

All-Wheel

Crab



GRADEABILITY

76% max. gradeability in 1st gear 4x4.
 3.40% max. gradeability in 6th gear 4x2.



TIRES AND WHEELS

29.5 x 25 - 34 ply rating, earthmoving-style tires. Steel disc wheel.



OUTRIGGER SYSTEM

Four independent horizontal beams and vertical jacks with integral holding valves, each independently controlled from operator cab.

100% - Fully extended outriggers

footprint53.3 sq. m (574 sq. ft.).

50% - Mid position outriggers

footprint27 sq. m (291 sq. ft.).

0% - Fully retracted outriggers

footprint9.6 sq. m (103 sq. ft.).

Pontoon diameter0.6 m (2.0 ft.).

Total floating ground bearing area1.1 sq. m (12.2 sq. ft.).

Outrigger spanLength 7.4 m (24.2 ft.). Width 7.3 m (23.9).

TECHNICAL DESCRIPTION



SWING

Bi-directional hydraulic swing drive with multi-disc wet brake and planetary reduction gearbox. Spring-applied hydraulically released swing brake and 360° pneumatic positive swing lock.
Max. swing speed: 2 rpm.



HYDRAULIC SYSTEM

PERMCO hydraulic pumps:
Gear pump for main and auxiliary winches, boom hoist and telescope cylinders.
Gear pump for steering.
Gear pump for outriggers and slewing.
1000 liter (264.1 gal) hydraulic reservoir with external sight and temperature gauge.

Easily accessible (10 micron) cartridge-style full-flow filters with bypass protection.
Max. operating pressure: 30 MPa (4351 psi, 300 bar).



COUNTERWEIGHT

Single 7500 kg (16, 535 lbs.) hyd removable counterweight.
Length3.1 m (10.2 ft.).
Width1 m (3.4 ft.).
Height0.8 m (2.8 ft.).



OPERATOR CAB

Full-vision operator cab designed for maximum comfort. All steel fabrication with acoustical lining and safety glass throughout. The cab has a sliding door on the left and a sliding window on the right with a swing-up skylight with retractable shade and wiper motor. Fully adjustable deluxe seat with tilt. Foot controls for boom telescope, service brake and engine throttle. Tilt steering.

Temperature control is provided by a hydraulically driven air conditioning unit. Easy view dashboard with gauges for all engine sensors and rocker switch outrigger controls. Standard amenities also include bubble level, dome light, left-side rearview mirror, seat belt, travel swing lock and signal horn.



MAX. BOOM LENGTH WITH JIB EXTENSION

10-17 m (33-56 ft.) jib consisting of 10 m (33ft.) lattice side stow jib and 7 m (23 ft.) manual pull out section. Main jib is offsettable at 0°, 20° and 40°.
Max. tip height with 10m (33 ft.) jib erected is 48.5 m (159.1 ft.).
Max. tip height with 10m (33 ft.) jib + 7 m (23 ft.) fixed pullout extension is 55.5 m (182.1 ft.).



LOAD MOMENT INDICATOR (LMI)

HIRSCHMANN HC4900 LMI control system. Microguard graphic display load moment and anti-two block system with audiovisual warning and function limiter.

System displays the following information: crane configuration, boom length, boom angle, load radius, allowed capacity, actual load, and load percentage of allowed capacity.

System includes settable work parameters: min./max. boom length, min./max. boom angle, defined swing area.



TRANSMISSION

Dana powershift transmission - 6 speeds forward and 3 speeds reverse.
Front axle disconnect offering both 4x4 and 4x2 operation.
Max. speed 39.4 km/hr (24.5 mph).



CAMERAS

The crane comes equipped with two cameras-a winch camera for viewing hoist operation and a rear camera for viewing the rear of the crane. The monitor is located in the cab and one can easily toggle between both camera views.



MAIN BOOM

Four-section, full-power synchronized boom. Boom is constructed of high-yield steel. 5 sheave quick reeve boom tip with removable rope guards. Rope termination lugs on both sides of boom head. Auxiliary lifting sheave and manual angle indicator are included.

Fully extended boom length:38.5 m (126.3 ft.).
Fully retracted boom length:12.5 m (41 ft.).
Max. tip height, main boom:41 m (134.5 ft.).

Boom angle range (min./max.)-3°/+78°.
Boom raising / lowering time110 sec. /55 sec.
Boom extension / retraction time120 sec. / 77 sec.



BRAKES

470 millimeters (18.5 in) diameter disc brakes on all wheels hydraulically operated.



HOKK BLOCK AND HOOK BALL

75-ton (80 U.S. ton), 5 sheave (steel), standard reeve hook block with odd part pin-and safety latch.
Hook block weight.....780 kg (1720 lbs.).
8.3-ton (9.1 U.S. ton) top swivel hook ball with safety latch.
Hook ball weight135 kg (298 lbs.).

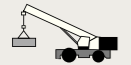






MAIN AND AUXILIARY WINCHES

Standard two speed main and auxiliary hoists, each with planetary reduction and spring applied multi-disc wet brake.
Each hoist features
Grooved drum lagging.
Hoist drum cable followers.
Max. permissible line pull:9,000 kg (19,842 lbs.).
Winch speed:0 - 125 m/min (0 - 410.1 ft./min).
Power up / power down
Electronic drum rotation indicators.

Rope construction:22 mm (0.87 in.) rotation-resistant compacted strand.

CRANE AND COMPONENT WEIGHTS

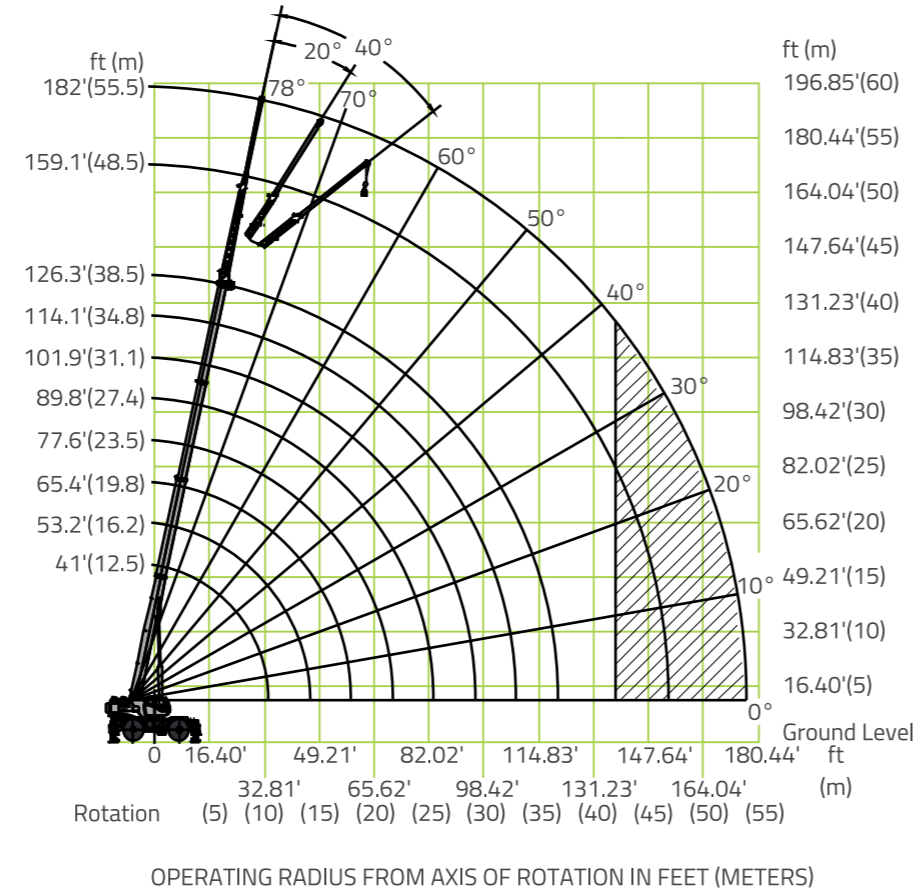
CRANE OPERATING WEIGHTS						
CRANE WITH CTWT.	Gross Vehicle Weight		Front Axle Load		Rear Axle Load	
	Kg	lb	Kg	lb	Kg	lb
	50,000	110,230	26,540	58,510	23,460	51,720

DEDUCTIONS FOR LOAD HANDLING				
	 JIB STOWED ASIDE BOOM	 AUXILIARY HEAD	 5 SHEAVE 75-TON HOOK BLOCK	 8.3-TON HOOK BALL
Kg	952	76	780	135
lb	2,099	168	1,720	298

TURNING RADIUS

FRONT WHEEL (4X2) STEERING	METRIC	IMPERIAL
Wall to wall over boom attached	13 m	42 ft. 8in
ALL WHEEL (4X4) STEERING	METRIC	IMPERIAL
Curb to curb	7.8 m	25 ft. 7in
TAIL SWING	METRIC	IMPERIAL
With counterweight	4.4 m	14 ft. 5in

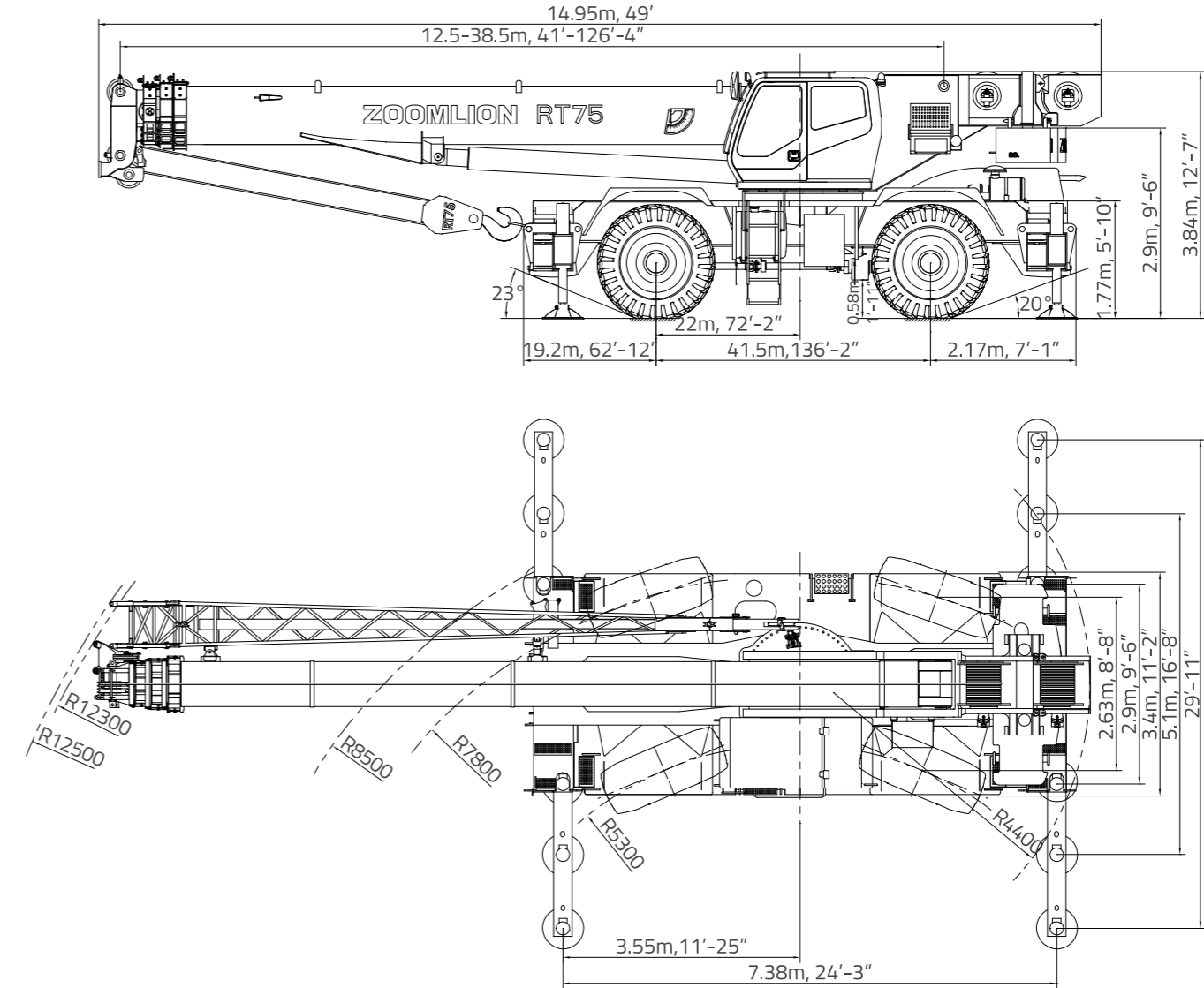
WORKING RANGE DIAGRAM





BOOM+FLY LENGTH IN FEET (METERS)


BOOM LENGTH IN FEET (METERS)

CRANE DIMENSIONS



LIFTS WITH OUTRIGGER BEAMS FULLY EXTENDED										
 7,500lbs.ctwt.			ANSI B30.5			75%			360°(UNIT:KG)	
MAIN BOOM RATED LOADS										
BOOM LENGTH (mm)	12500		16214		19929		23643			
	Boom Angle (°)	360° (KG)	Boom Angle (°)	360° (KG)	Boom Angle (°)	360° (KG)	Boom Angle (°)	360° (KG)		
3000	70	75000	74.8	44860						
3500	67.4	75000	72.9	44860						
4000	64.8	68400	71	44860						
4500	62.2	61650	69.1	44860	73.2	34450				
5000	59.5	55950	67.1	44860	71.6	32950				
5500	56.6	51100	65.2	43550	70.1	31590	73.4	24700		
6000	53.7	46900	63.1	42050	68.5	30340	72.1	23750		
6500	50.6	43200	61.1	40650	67	29200	70.8	22850		
7000	47.4	39990	59	39400	65.4	28150	69.5	22050		
7500	44	35420	56.8	36350	63.7	27200	68.2	21300		
8000	40.3	30780	54.6	31650	62.1	26300	66.8	20600		
9000	31.6	24120	49.9	24890	58.7	24650	64.1	19350		
10000	19	19590	44.9	20260	55.2	20550	61.3	18250		
11000	0	15490	39.3	16900	51.4	17170	58.5	17250		
12000			32.8	14360	47.5	14610	55.5	14860		
14000			10.5	10800	38.7	10990	49.2	11210		
16000			0	10690	27.4	8570	42.2	8750		
18000					0	7090	33.9	7000		
20000							23	5700		
21558							0	5000		

LIFTS WITH OUTRIGGER BEAMS FULLY EXTENDED										
 7,500lbs.ctwt.			ANSI B30.5			75%			360°(UNIT:KG)	
MAIN BOOM RATED LOADS										
BOOM LENGTH (mm)	27357		31071		34786		38500			
	Boom Angle (°)	360° (KG)	Boom Angle (°)	360° (KG)	Boom Angle (°)	360° (KG)	Boom Angle (°)	360° (KG)		
6500	73.5	19500								
7000	72.4	18850								
7500	71.3	18200	73.6	15740						
8000	70.2	17600	72.6	15240						
9000	67.9	16550	70.7	14350	72.8	12300				
10000	65.6	15590	68.7	13600	71.1	11700	73	10600		
11000	63.2	14800	66.7	12850	69.3	11150	71.4	10150		
12000	60.8	14050	64.6	12250	67.5	10600	69.8	9700		
14000	55.8	11270	60.4	11150	63.9	9750	66.6	8450		
16000	50.4	8810	56	8970	60.1	8980	63.3	7400		
18000	44.6	7050	51.3	7190	56.1	7200	59.8	6550		
20000	38	5730	46.3	5850	52	5860	56.3	5850		
22000	30.1	4720	40.8	4820	47.6	4830	52.6	4920		
24000	19.3	3940	34.5	4000	42.8	4010	48.6	4090		
26000	0	3620	26.9	3340	37.6	3330	44.4	3410		
28000			16.1	2810	31.5	2780	39.9	2840		
30000			0	2650	24.1	2330	34.8	2370		
32000					12.9	1970	29	1970		
34000					0	1920	21.7	1630		
36000							9.7	1370		
36409							0	1370		

LIFTS WITH OUTRIGGER BEAMS FULLY EXTENDED								
 7,500lbs.ctwt.		ANSI B30.5		75%			360°(UNIT:KG)	
10 M JIB RATED LOADS								
BOOM ANGLE (°)	0° OFFSET		20° OFFSET		40° OFFSET			
	LOAD RADIUS (MM)	360° (KG)	LOAD RADIUS (MM)	360° (KG)	LOAD RADIUS (MM)	360° (KG)		
76	9634	6000	12459	3050	14684	1990		
74	11269	5800	14049	2850	16197	1890		
72	12888	5600	15619	2700	17689	1850		
70	14489	5050	17168	2550	19156	1800		
68	16070	4500	18693	2450	20597	1750		
66	17628	3990	20192	2350	22010	1700		
64	19163	3600	21665	2250	23394	1650		
62	20671	3250	23108	2150	24747	1650		
60	22152	2950	24521	2050	26068	1600		
58	23603	2700	25902	1990	27354	1600		
56	25023	2450	27248	1940	28604	1550		
54	26410	2250	28558	1850	29816	1550		
52	27762	2100	29832	1800	30990	1500		
50	29078	1890	31066	1650	32124	1500		
48	30356	1750	32260	1550	33215	1450		
46	31594	1630	33412	1450	34264	1350		
44	32791	1440	34521	1350	35269	1300		
42	33946	1270	35585	1210	36228	1180		
40	35057	1120	36603	1070	37140	1040		
38	36122	990	37574	940	38004	920		

LIFTS WITH OUTRIGGER BEAMS FULLY EXTENDED								
 7,500lbs.ctwt.		ANSI B30.5		75%			360°(UNIT:KG)	
17 M JIB RATED LOADS								
BOOM ANGLE (°)	0° OFFSET		20° OFFSET		40° OFFSET			
	LOAD RADIUS (MM)	360° (KG)	LOAD RADIUS (MM)	360° (KG)	LOAD RADIUS (MM)	360° (KG)		
76	11327	3500	16372	1650	20345	1050		
74	13198	3350	18162	1550	21999	990		
72	15051	3000	19927	1450	23623	990		
70	16883	2700	21666	1400	25216	940		
68	18691	2450	23375	1300	26775	900		
66	20475	2250	25053	1250	28300	900		
64	22230	2100	26699	1200	29787	850		
62	23956	1940	28309	1150	31235	850		
60	25651	1800	29882	1100	32643	800		
58	27311	1700	31416	1050	34009	800		
56	28936	1550	32909	990	35330	800		
54	30523	1500	34360	940	36606	750		
52	32070	1400	35766	940	37835	750		
50	33576	1250	37126	900	39015	750		
48	35038	1150	38438	850	40145	750		
46	36455	1050	39701	850	41224	700		
44	37825	940	40913	800	42249	700		
42	39146	900	42073	750	43221	650		
40	40417	800	43179	650	44138	650		
38	41636	750	44229	600	44998	600		

LIFTS WITH OUTRIGGER BEAMS AT MID - POSITION									
7,500lbs.ctwt. ANSI B30.5 75% 360°(UNIT:KG)									
MAIN BOOM RATED LOADS									
BOOM LENGTH (MM)	12500		16214		19929		23643		
LOAD RADIUS (MM)	Boom Angle (°)	360° (KG)	Boom Angle (°)	360° (KG)	Boom Angle (°)	360° (KG)	Boom Angle (°)	360° (KG)	360° (KG)
3000	70	75000	74.8	44860					
3500	67.4	68800	72.9	44860					
4000	64.8	61100	71	44860					
4500	62.2	54750	69.1	44860	73.2	34450			
5000	59.5	44400	67.1	44860	71.6	32950			
5500	56.6	35960	65.2	36910	70.1	31590	73.4	24700	
6000	53.7	29980	63.1	30850	68.5	30340	72.1	23750	
6500	50.6	25530	61.1	26340	67	26640	70.8	22850	
7000	47.4	22090	59	22850	65.4	23140	69.5	22050	
7500	44	19340	56.8	20070	63.7	20350	68.2	20630	
8000	40.3	17110	54.6	17800	62.1	18070	66.8	18350	
9000	31.6	13690	49.9	14330	58.7	14590	64.1	14840	
10000	19	11220	44.9	11800	55.2	12040	61.3	12290	
11000			39.3	9870	51.4	10110	58.5	10340	
12000			32.8	8360	47.5	8590	55.5	8810	
14000			10.5	6190	38.7	6360	49.2	6560	
16000					27.4	4830	42.2	4990	
18000							33.9	3850	
20000							23	3000	

LIFTS WITH OUTRIGGER BEAMS AT MID - POSITION									
7,500lbs.ctwt. ANSI B30.5 75% 360°(UNIT:KG)									
MAIN BOOM RATED LOADS									
BOOM LENGTH (MM)	27357		31071		34786		38500		
LOAD RADIUS (MM)	Boom Angle (°)	360° (KG)	Boom Angle (°)	360° (KG)	Boom Angle (°)	360° (KG)	Boom Angle (°)	360° (KG)	360° (KG)
6500	73.5	19500							
7000	72.4	18850							
7500	71.3	18200	73.6	15740					
8000	70.2	17600	72.6	15240					
9000	67.9	14890	70.7	14350	72.8	12300			
10000	65.6	12340	68.7	12530	71.1	11700	73	10600	
11000	63.2	10390	66.7	10570	69.3	10580	71.4	10150	
12000	60.8	8860	64.6	9040	67.5	9040	69.8	9120	
14000	55.8	6620	60.4	6770	63.9	6780	66.6	6870	
16000	50.4	5050	56	5190	60.1	5200	63.3	5300	
18000	44.6	3890	51.3	4030	56.1	4040	59.8	4130	
20000	38	3020	46.3	3140	52	3150	56.3	3240	
22000	30.1	2340	40.8	2440	47.6	2450	52.6	2540	
24000	19.3	1820	34.5	1880	42.8	1890	48.6	1970	
26000			26.9	1430	37.6	1430	44.4	1500	
28000			16.1	1080	31.5	1050	39.9	1110	

LIFTS WITH OUTRIGGER BEAMS FULLY RETRACTED									
7,500lbs.ctwt. ANSI B30.5 75% 360°(UNIT:KG)									
MAIN BOOM RATED LOADS									
BOOM LENGTH (MM)	12500		16214		19929		23643		
LOAD RADIUS (MM)	Boom Angle (°)	360° (KG)	Boom Angle (°)	360° (KG)	Boom Angle (°)	360° (KG)	Boom Angle (°)	360° (KG)	360° (KG)
3000	70	51050	74.8	44860					
3500	67.4	37080	72.9	38020					
4000	64.8	28670	71	29510					
4500	62.2	23060	69.1	23840	73.2	24080			
5000	59.5	19060	67.1	19780	71.6	20020			
5500	56.6	16050	65.2	16740	70.1	16970	73.4	17240	
6000	53.7	13710	63.1	14370	68.5	14600	72.1	14860	
6500	50.6	11840	61.1	12480	67	12710	70.8	12950	
7000	47.4	10310	59	10930	65.4	11150	69.5	11390	
7500	44	9040	56.8	9640	63.7	9860	68.2	10100	
8000	40.3	7970	54.6	8550	62.1	8770	66.8	9000	
9000	31.6	6260	49.9	6810	58.7	7020	64.1	7250	
10000	19	4980	44.9	5480	55.2	5690	61.3	5910	
11000			39.3	4440	51.4	4650	58.5	4850	
12000			32.8	3600	47.5	3800	55.5	4000	
14000			10.5	2380	38.7	2540	49.2	2710	
16000					27.4	1640	42.2	1800	
18000							33.9	1110	

LIFTS WITH OUTRIGGER BEAMS FULLY RETRACTED									
7,500lbs.ctwt. ANSI B30.5 75% 360°(UNIT:LB)									
MAIN BOOM RATED LOADS									
BOOM LENGTH (MM)	27357		31071		34786		38500		
LOAD RADIUS (MM)	Boom Angle (°)	360° (KG)	Boom Angle (°)	360° (KG)	Boom Angle (°)	360° (KG)	Boom Angle (°)	360° (KG)	360° (KG)
6500	73.5	12980							
7000	72.4	11430							
7500	71.3	10130	73.6	10310					
8000	70.2	9040	72.6	9210					
9000	67.9	7290	70.7	7460	72.8	7460			
10000	65.6	5950	68.7	6110	71.1	6120	73	6190	
11000	63.2	4900	66.7	5060	69.3	5060	71.4	5130	
12000	60.8	4050	64.6	4200	67.5	4210	69.8	4280	
14000	55.8	2760	60.4	2910	63.9	2920	66.6	3000	
16000	50.4	1840	56	1980	60.1	1990	63.3	2070	
18000	44.6	1150	51.3	1280	56.1	1290	59.8	1380	

LIFTS ON TIRES								
7,500lbs.ctwt.			ANSI B30.5		75%		360°(UNIT:KG)	
MAIN BOOM RATED LOADS								
BOOM LENGTH (MM)	12500				16214			
	LOAD RADIUS (MM)	Boom Angle (°)	360° (KG)	STATIONARY OVER FRONT	PICK & CARRY	Boom Angle (°)	360° (KG)	STATIONARY OVER FRONT
3000	70	22070	35450	28500	74.8	22540	35850	28900
3500	67.4	18800	31600	25210	72.9	19350	32050	25600
4000	64.8	16270	28440	22440	71	16790	28850	22900
4500	62.2	14120	25720	20170	69.1	14640	26180	20630
5000	59.5	12410	23430	18230	67.1	12940	23890	18640
5500	56.6	10890	21450	16500	65.2	11440	21900	16950
6000	53.7	9670	19730	15030	63.1	10190	20180	15520
6500	50.6	8570	18170	13770	61.1	9070	18630	14230
7000	47.4	7610	16840	12640	59	8140	17270	13070
7500	44	6660	15280	11590	56.8	7230	15890	12090
8000	40.3	5730	13590	10690	54.6	6280	14170	11170
9000	31.6	4250	10950	9110	49.9	4760	11490	9590
10000	19	3130	9010	7630	44.9	3600	9500	8100
10430	0	2800	8430	7050				
11000					39.3	2680	7970	6570
12000					32.8	1950	6760	5370
14000					10.5	---	5000	3620

LIFTS ON TIRES								
7,500lbs.ctwt.			ANSI B30.5		75%		360°(UNIT:KG)	
MAIN BOOM RATED LOADS								
BOOM LENGTH (MM)	19929				23643			
	LOAD RADIUS (MM)	Boom Angle (°)	360° (KG)	STATIONARY OVER FRONT	PICK & CARRY	Boom Angle (°)	360° (KG)	STATIONARY OVER FRONT
4500	73.2	14810	26310	20750				
5000	71.6	13110	24010	18800				
5500	70.1	11610	22050	17140	73.4	11810	22200	17290
6000	68.5	10350	20320	15660	72.1	10550	20490	15840
6500	67	9290	18820	14410	70.8	9470	18980	14570
7000	65.4	8350	17450	13240	69.5	8540	17650	13440
7500	63.7	7440	16110	12250	68.2	7670	16350	12450
8000	62.1	6490	14390	11330	66.8	6710	14620	11510
9000	58.7	4970	11700	9790	64.1	5180	11920	9970
10000	55.2	3800	9710	8300	61.3	4010	9920	8510
11000	51.4	2880	8170	6760	58.5	3080	8370	6970
12000	47.5	2130	6950	5550	55.5	2330	7140	5740
14000	38.7	1010	5150	3750	49.2	1190	5320	3920
16000	27.4	---	3890	2500	42.2	---	4030	2640
17847	0	---	3130	1750				
18000					33.9	---	3090	1700
20000					23	---	2380	---
21558					0	---	2020	---

LIFTS ON TIRES				
7,500lbs.ctwt.		ANSI B30.5	75%	360°(UNIT:KG)
MAIN BOOM RATED LOADS				
BOOM LENGTH (MM)	27357			
	LOAD RADIUS (MM)	Boom Angle (°)	360° (KG)	STATIONARY OVER FRONT
6500	73.5	9490	19010	14590
7000	72.4	8560	17630	13460
7500	71.3	7690	16380	12420
8000	70.2	6740	14650	11540
9000	67.9	5220	11960	10000
10000	65.6	4050	9960	8550
11000	63.2	3120	8410	7000
12000	60.8	2370	7190	5780
14000	55.8	1230	5360	3960
16000	50.4	---	4080	2670
18000	44.6	---	3130	1720
20000	38	---	2400	1000
22000	30.1	---	1840	---
24000	19.3	---	1400	---
25270	0	---	1250	---

Note: The crane is stationary when it is in the 360° full range operation and in the operation over front.