

20 m Spider Aerial Work Plataform GH20

Product Features

- Traveling is achieved using a two-speed hydraulic reducer to improve work efficiency.
- The auto-throttle can realize throttle follow-up and is perfectly matched with the proportional valve, so that the platform has better micro-movement and softer movements.
- The platform has a built-in load protection system, which can automatically control the arm length and angle to improve the safety of workers.
- Outrigger sensor to improve the safety.
- One-key levelling, improve work efficiency.
- The crawler can be expanded outward to improve walking stability.
- Equipped with diesel engine system, electric system and emergency hand pump system, which can provide power for all actions.
- Customers can choose non-marking tracks according to their needs, which is more convenient for indoor use.
- The platform can be disassembled or replaced as needed, and can be easily disassembled.

**Optional
configuration**

Non-marking rubber

Petrol engine

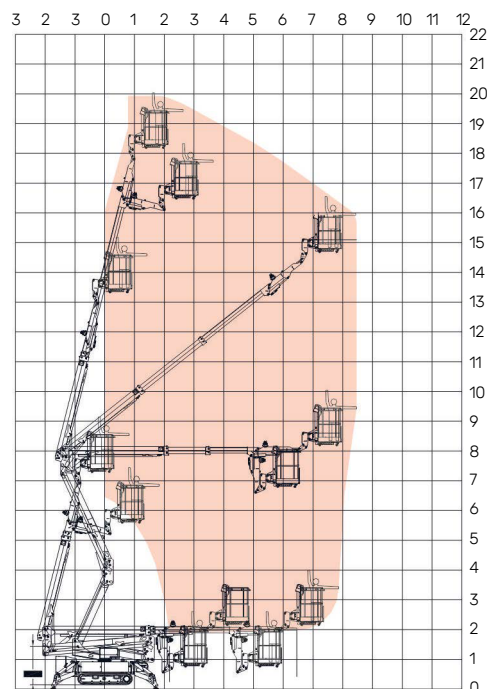
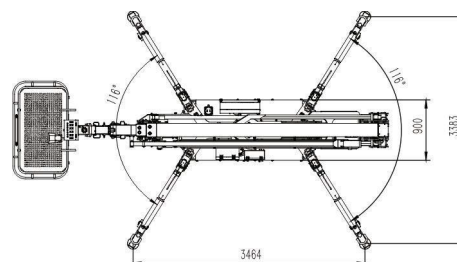
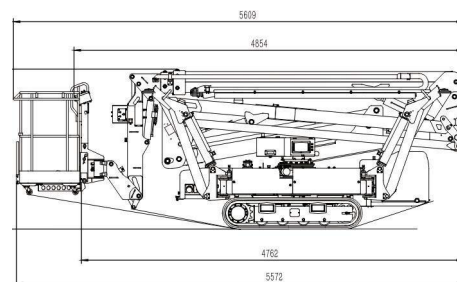


20 m Spider Aerial Work Plataform GH20

Max. work height	20m
Max. platform height	18.3m
Max. side outreach	8.4m
Rotation angle	360° (continuous)
Platform dimensions	1.3m x 0.75m
Platform rotation angle	180°
Max. platform capacity	230Kg
Shipping length	5.61m/4.81m (without basket)
Shipping width	1.45m/0.90m (without basket)
Stowed height	1.99m
Unfolded outrigger dimension	3.40m x 3.46m
Max. gradeability	17° / (30%)
Driving speed	High speed 1.4Km/h low speed 0.93Km/h
Wight	3500Kg
Dimensions	5610mm x 900mm x 1990mm
Diesel 3TNV74	10.8Kw/2400Rpm
Electric motor	2.2Kw
Manual emergency pump	Manual operation
Driving	Wireless proportional control
Outrigger	Wireless proportional control
Boom	Manual operation

One-key levelling, Height limiter, outrigger sensor, alarm device, emergency button, interlock device

GX390 non-marking rubber, GX390 petrol engine



Working Range



Servicio: 333-576-3140

www.garveg.com

